

Hexham & District Motor Club



The Car Barn Kielder Targa Rally



Last year's winners Steve Head and Phil Savage

Sponsored by

———— ASTON WORKSHOP ————
CAR BARN
— SPORTS, PRESTIGE & CLASSIC —

31st of August 2025

Final Instructions



Forestry England

— ASTON WORKSHOP —
CAR BARN
— SPORTS, PRESTIGE & CLASSIC —

The leading independent specialist for sales, service and repair in the North

Car Barn Beamish, nestled within the Red Row Estate in County Durham, was established over a ten years ago to provide a range of workshop services for sports, prestige and classic cars for owners in the North East.

Our classic car services range from traditional maintenance jobs including setting points and carb adjustments to full recommissioning's to breathe new life into your pride and joy. For owners with more modern prestige cars our reputation as a Ferrari and Bentley specialist is built upon a decade of experience of caring for specialist and performance cars. As the INEOS Automotive Sales and Service agent for the North East, our skills and experience also extend to off-road and 4x4 vehicles.



If you're looking for a workshop to service, repair or upgrade your car, contact Car Barn Beamish to discuss how we can help.



CB
CAR BARN
DRIVERS' CLUB

For enquiries email
drivers@carbarn.co.uk

The third year of our free monthly car meets is drawing to a close, with only the Car Barn Trophy (Thursday 22nd August) and September Sign Off (Thursday 12th September) remaining before the winter break. With over 800 cars in attendance at each meet and a new free membership scheme with loads of exclusive benefits, the Car Barn Drivers Club will be finishing 2024 as one of the largest car meets in the North!



PROUD TO
BE BASED IN
COUNTY DURHAM

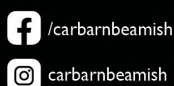
FOR SALES ENQUIRIES
CALL OUR SALES MANAGER
JONATHON WEBB ON
07442 897 760 OR EMAIL
JONATHON@CARBARN.CO.UK



DOWNLOAD OUR ANNUAL NEWSPAPER
16 pages covering everything Car Barn



carbarn.co.uk



T. +44 (0) 1207 606120
E. sales@carbarn.co.uk
Red Row, Beamish, Durham DH9 0RW





Experience a new way to manage your wealth

At True Potential Wealth Management, our clients are better informed, confident and more empowered to reach their financial goals. Through the use of our award-winning technology, we provide straightforward and transparent advice in a simple and convenient way.

As a Partner, I can advise you on:

- Financial Planning
- Investments and Savings
- Protection and Insurance
- Retirement Planning
- Life Assurance

**Contact me today and discover why
we're Beyond Wealth Management:**



With investing, your capital is at risk. Investments can fluctuate in value and you may get back less than you invest. Tax rules can change at any time.

Head Office: Gateway West, Newburn Riverside, Newcastle upon Tyne, NE15 8NX.

Authorised and regulated by the Financial Conduct Authority, FRN 529810.
Registered in England and Wales as a Limited Liability Partnership No. OC356611.



Andrew Fish DipPFS
Wealth Management Partner

M 07866 534 476
E andrewfish@tpllp.com
W andrewfish.tpllp.com

Hexham and District Motor Club

Kielder Targa Rally sponsored by The Car Barn Beamish – 31st of August 2025

Final Instructions

Thank you for your entry to the third running of The Car Barn Kielder Targa Rally. We were blown away by the response when our entries opened and we really hope you are not disappointed. We have worked hard to try and learn from previous years to make this as good as it can be, and we hope you enjoy it.

We must thank Forestry England for their cooperation in organising the event, our local RLO for his advice, The Car Barn for their sponsorship and support, Wark Sports Club as rally HQ and Motorsport Diagrams for producing the road book.

As you all know we can not run a rally without the help of volunteer marshals who give up their time, use their vehicles and usually go above and beyond to make the event run safely. Please respect those people as much as we do, and remember to say thank you for marshalling.

Now for the official bits.

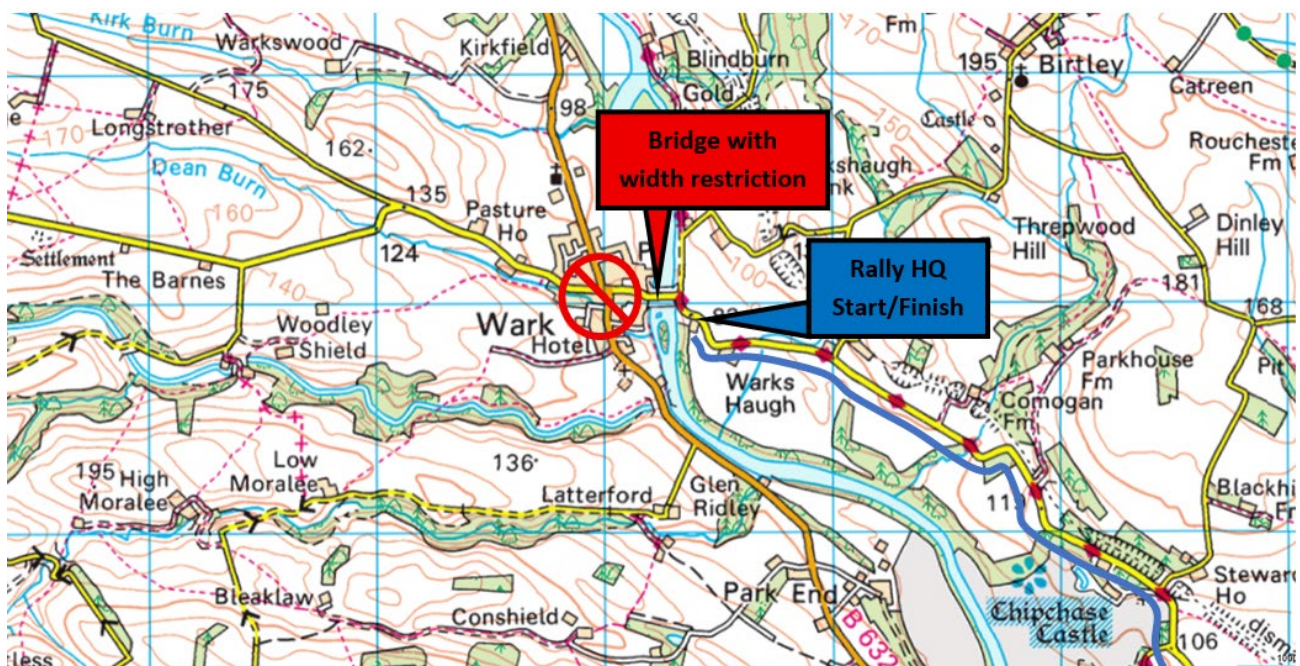
These finals are an integral part of the instructions and should be treated as part of the event regulations

Very Important Information

Access to this years START/FINISH venue MUST be done from the EAST side of Wark using the yellow road.

See the map below showing the acceptable routes in for van and trailers. The reason is that the bridge across the North Tyne River in Wark has a width restriction and you will not be able to cross if you try to access the start venue from Wark village.

The bridge is fine for cars, but vans and trailers will cause problems, please make sure you plan your route to the rally in advance!



Your start number is detailed on the seeded entry list which can be viewed at rallies.info. Cars will start each test at one minute intervals, apart from the first modern car which will have a sensible gap ahead.

2 Signing on

Signing on will be done on the morning of the event at Rally HQ, once scrutineered please report to signing on with your licence and club cards ready.

3 Permits

Motorsport UK Permit No(s): **204157**
Route Authorisation No: **109/25**

4 Amendments to Supplementary Regulations

Scrutineer Colin Wallace

5 Marshals/Judges of Fact

All signed on marshals are judges of fact and their decision is final. Any instances of abuse towards a marshal will not be tolerated and will be reported to the Clerk of the Course, resulting in exclusion.

6 Fuel

There are **NO** fuel stations on the route of the rally, please make sure your car is fuelled up for the whole event before arriving at the start venue. Total mileage for the event is 74 miles, 24 of which are competitive

The nearest fuel is at Hexham - grid reference 87/942 648 or [What3words simply.com/forted.oils](http://What3words.simply.com/forted.oils)

7 Car preparation and equipment

Please make sure your car is ready for scrutineering, this includes the following points:

- Current MOT (if needed), Tax and V5
- All interior trim present, in line with MSUK road rally regulations
- Spill kit, warning triangle, SOS/OK board, tow rope, first aid kit
- All lights, horn, wipers etc. work
- Tyres are legal for use on the road and within the road rally tyre regulations

All the above points are mandatory, there is no excuse for non-compliance

Navigators note – We strongly advise that you bring an A4 sized clip board to put your time card on, at various points you will need your time card signed by an official, so having it secured on a clip board will assist both our officials and your test time.

8 Results

Results will be produced by our own in house results team, they will be available on our website, and on display at rally HQ when possible.

All results queries should be done using the forms included in your competitor packs, they can be handed into the results team based at rally HQ, or sent by whatsapp on 07787 580 208

9 Retirements and recovery

If you are unfortunate enough to retire, please do let us know so that we are not searching for you, please message the Clerk of the Course (Jonathon) on 07929 229 413

If you go off the road and need recovery, please wait for the recovery vehicle that will follow the closing car through the test. They may well be busy dealing with others so please be patient, but also be ready for their arrival by attaching a tow rope for example. We will try to assist as much as possible to get you sorted.

If for any reason you are blocking the road due to a mechanical issue or crash, please find the nearest marshal who will have a radio and can help stop the test.

10 Road sections

All road sections are deemed quiet zones, there is no rush between tests or back to rally HQ, please respect other road users and the residents on the route.

The forest roads you use as link sections between tests will still be open to forestry traffic, as well as rally officials. Please drive with care, anyone caught driving in any other manner will be excluded!

11 Rally HQ procedure

Start/Finish venue – Wark Sports Club 87/ 864 769 or [what3words polishing.outbid.self](#)

Make sure you approach this venue from the east using the yellow road as access from the B6320 is limited by a narrow bridge!

Space at the site is limited, so please park as instructed by the marshals. All competitors will be required to park all vehicles on the grass field behind the building, access round the building is narrow so please take care when driving on the site. Scrutineering and the catering van will be located on the grass field also.

Once unloaded please queue up for scrutineering. Once you are through scrutineering, park up, get signed on and collect your competitor pack from Signing On.

There will be a drivers briefing outside Rally HQ at 9:00am (at least one member of each crew must attend)

MTC 1 will be outside Rally HQ, at the exit of the field. Car 0 leaves MTC1 at 9:30am

12 Competitor Packs

Your pack will contain the following items

- Roadbook with test diagrams and road sections
- Time cards x 4
- Food vouchers

- Rally plates and numbers

Please stick the rally plates on the front and back of the car, stick the yellow numbers on rear side windows or equivalent location for two seater cars.

13 Food Voucher

The food voucher entitles you to £7 worth of food at the catering van located at Rally HQ. You can choose when to use this, morning or lunch time, and you can buy extra items at your own expense.

14 Awards Presentation

Awards will be presented at Rally HQ as soon as they are declared final. We would like to present these awards in front of a good crowd and as such we would like you all, where possible to remain on site until that time. We fully appreciate that many of you have long journeys to make, but we intend to have the event wrapped up fairly early and we have refined our results system to allow for a speedy service. We also don't want to post any awards out!

15 Code Boards

Code boards must be written in the correct box on the time card, in ink, before the next passage control or finish of test. At these manned locations the code board will be checked, if correctly recorded it will receive a tick through it, if incorrect or missing it will receive a cross through it. Any issued with a cross will also be recorded on the marshals check sheet so can't be added later.

Code boards will take the form of car number plates. Their location will be detailed on the test diagrams and denoted on the route by a downward pointing arrow that faces you. Once alongside you will be able to read the code board. You will only need to record one digit from the number plate, it will tell you which one once you arrive, you always count from the top down. This will be changed when the test is reused.

Example below, in this case the answer you would record in the route check box would be W, because it is the 6th digit down.



Stop astride will be denoted by two arrows pointing towards each other, a passage control is denoted by a 'C' board



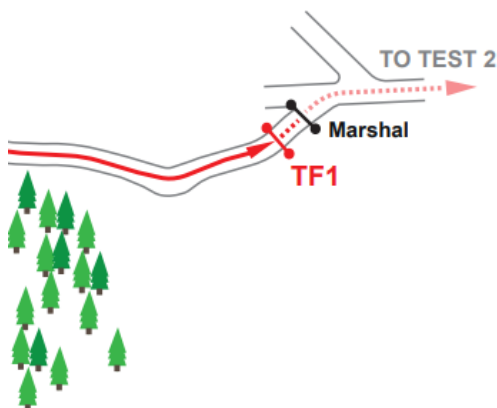
16 Test Finish Line Procedure

The finish line of each test is clearly shown on the diagrams and is where quick driving **MUST** stop.

Our finish line marshals will be stood some distance beyond the finish line for their own safety, which is paramount! Anyone seen driving quickly from the test finish line to the marshals will receive a telling off and be subject to a penalty at the Clerk of the Course's discretion.

The diagram below is an example of test 1 finish. The line where the clock will be stopped is in red and labelled TF1. Once you have stopped astride that line, front wheels over it, rear wheels behind it, the marshal will stop the clock. You will then calmly and slowly pull forward to the marshal and present your time card on an A4 clip board so that they can fill in your time.

In addition to the diagram there will also be a clear sign at that line saying **STOP**, so there is no excuse for getting this wrong.



motorsport diagrams

Are you and your club planning on running an event and in need of clear, accurate and professional diagrams?
Whether you're planning an Autosolo, Targa or Stage rally or need a full OS mapbook, we can help raise your event to the next level and give your competitors the clearest instructions possible.

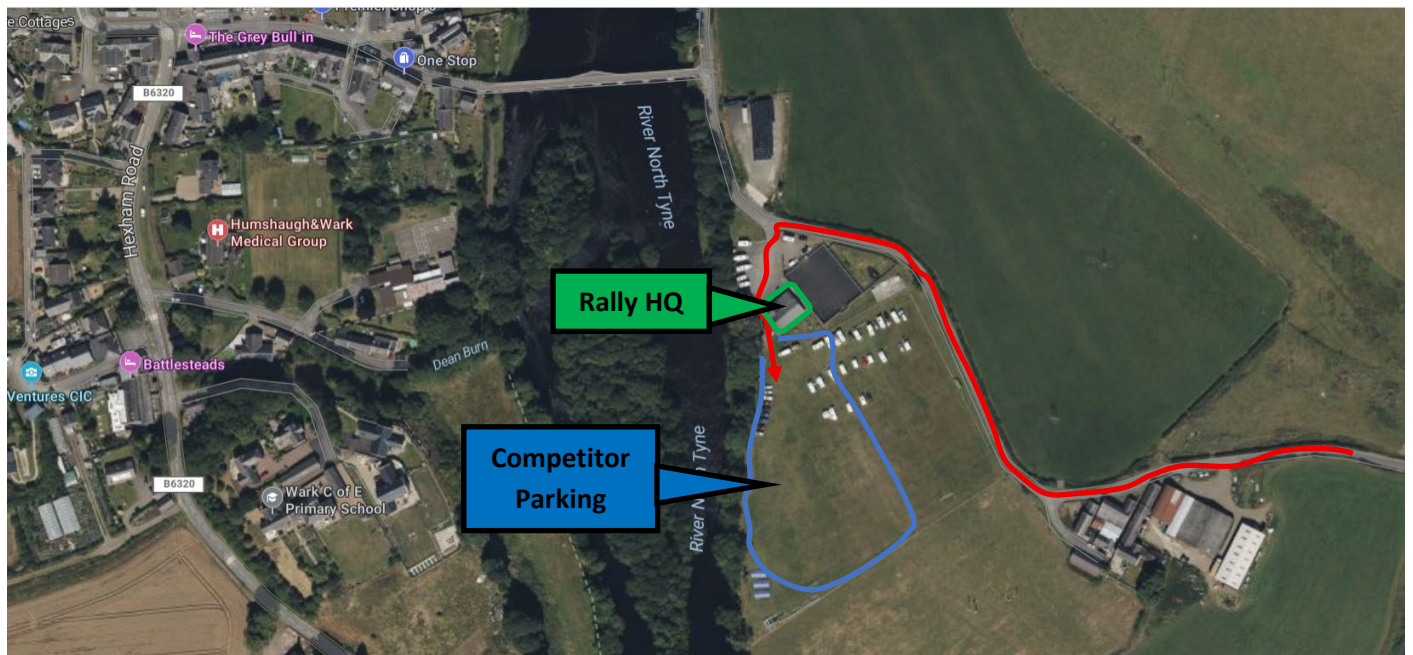
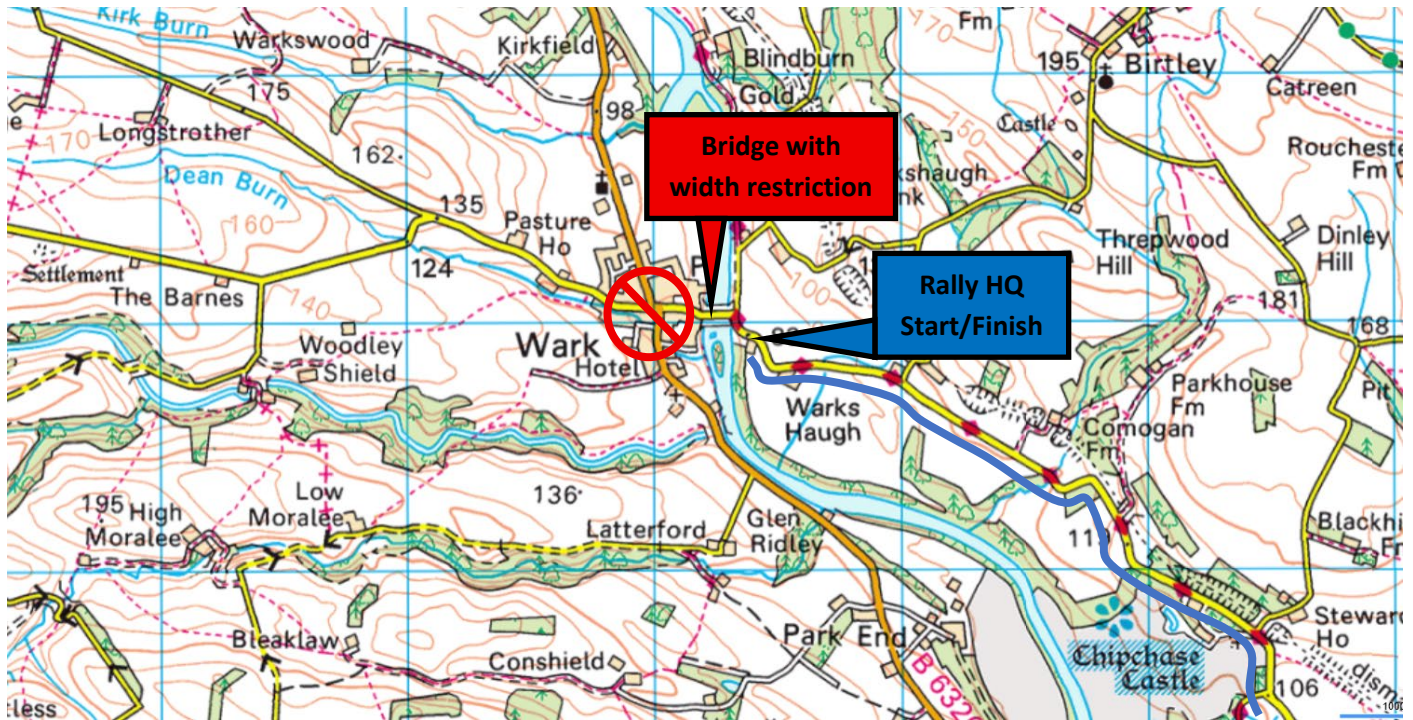
Please get in touch to discuss your requirements.....



Motorsport Diagrams

motorsportdiagrams@outlook.com







The Car Barn Kielder Targa is supported by SiteLink Communications who have supplied all our marshals with radio equipment to make for a safer and more efficient rally.

Please contact them should you require communication equipment throughout the UK

SiteLink offer two-way radios for sale, hire and with full service backup throughout the UK to a wide variety of user groups. In addition, SiteLink has expanded to include the supply of full telephone systems including maintenance, installation and other high tier communications products as detailed in this web site. The Head Office is based in Washington, Tyne & Wear with offices throughout the UK

Quality of service is assured with the strict procedures being followed to ISO9001:2015 standards.

Five key reasons to choose SiteLink as your communications partner:

- SiteLink provide cost effective communications solutions from the most simple to the most complex.
- SiteLink will assess an organisations communications needs and advise on ways of improving efficiency and service.
- SiteLink provide peace of mind by offering a "Total Solution".
- SiteLink provide the complete range of support services from initial advice to full project management and after sales support.



Tel: 0330 1 37 37 37 www.sitelink.co.uk